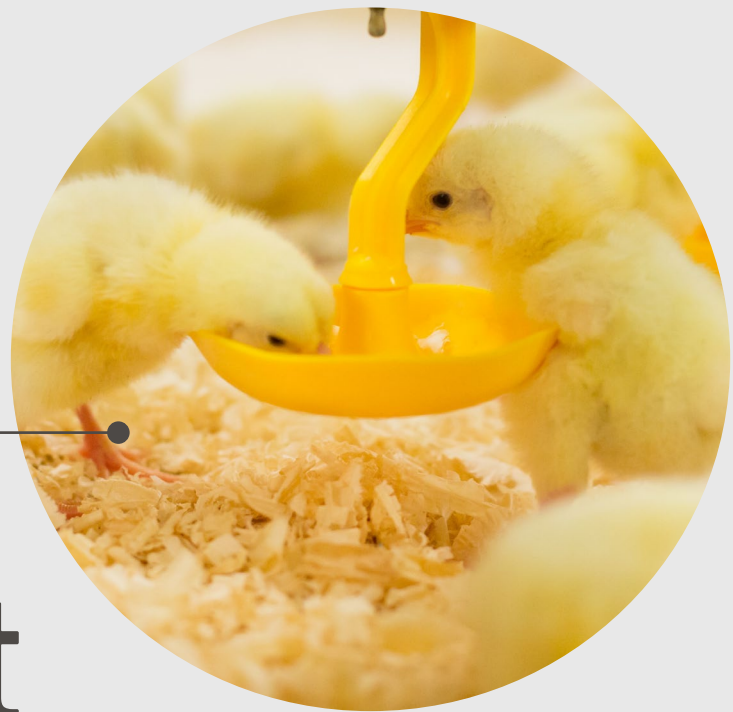


2024



Product Catalogue

CONTACT US



+64 6 752 0093



info@ptnpoultry.com



485 Corbett Road, RD3,
New Plymouth, New Zealand

Poultry Experts



ptnpoultry.com

Item Code Product Description

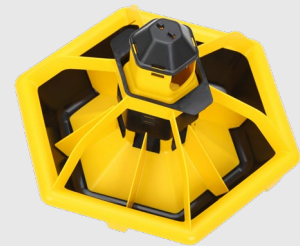
100.154 PTN TRI-HF Drinker Cup



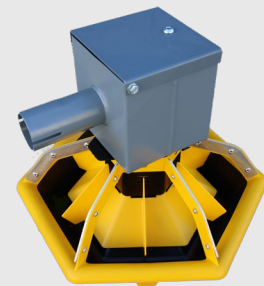
100.118 Drinker System Complete 4m
with Pressure Regulator



200.143 HP1020 Feed Pan
*all parts available for individual purchase



200.106 Feed Pan Control Box
(includes sensor)



500.134 PTN Air Inlet
*all parts available for individual purchase



| Item Code | Product Description |
|-----------|---------------------|
|-----------|---------------------|

500.133

IC600 PTN Cover



500.149

PTN LT600 Light Trap



500.151

Light Trap Wedge

Left

500.152

Right



500.153

PTN Light Trap Connector Strip



500.121

PTN Grill
 *fits onto IC600 PTN Cover



700.134

14 Ton Silo



| Item Code | Product Description | |
|-----------|---|---|
| 100.103 | Drinker Line Dropper Cord (Nylon) 300m pack |  |
| 100.104 | Drinker Line Dropper Cord Nylon (white) 240m roll | |
| 100.106 | PVC Fitting for square Tube Drinker |  |
| 100.107 | White PVC Drinker fitting - Square |  |
| 100.108 | PTN Drinker Joiner - Grey |  |
| 100.109 | Female | |
| | Male | |
| 100.111 | Round Drinker Plug |  |
| 100.112 | 22mm Drinker Pulley |  |
| 100.114 | Drinker Support Aluminium 5.9m | |
| 100.116 | Aluminium Drinker Support Bracket |  |
| 100.119 | Drinker Tube 4m Length | |
| 100.123 | Drinker Line Electric Fence Part |  |

| Item Code | Product Description | |
|-----------|--|---|
| 100.101 | Anti Perch Kit for Drinking Line |  |
| 100.124 | Regulator End Plug |  |
| 100.125 | Flush End I-Flow Complete |  |
| 100.126 | I-Flow Flush End |  |
| 100.102 | Breather Tube |  |
| 100.127 | Hose Adaptors |  |
| 100.128 | Black | |
| 100.129 | White | |
| 100.129 | Yellow | |
| 100.131 | Black PVC Threaded Hose Connector |  |
| 100.133 | End Line Regulator to square (kit) with plug I Flow B |  |
| 100.134 | End Line Regulator to square (kit) without plug I Flow E |  |

| Item Code | Product Description | |
|-----------|---------------------------------------|---|
| 100.135 | Midline Slope Regulator |  |
| 100.136 | Breeder Nipple |  |
| 100.137 | Broiler Nipple |  |
| 100.138 | PVC End Complete |  |
| 100.143 | I-Flow Pressure Regulator |  |
| 100.144 | Square Pipe Adaptor Red |  |
| 100.146 | Square Pipe Adaptor Yellow | |
| 100.145 | Round Pipe Adaptor |  |
| 100.147 | Slope Regulator Adjustable 10-45cm |  |
| 100.148 | Electric Fence Spring |  |

| Item Code | Product Description | |
|-----------|---|---|
| 100.151 | Black Plastic Tap Fitting 3/4" |  |
| 100.152 | 3/4" PVC T for Drinker System |  |
| 100.153 | PVC Pipe Fitting |  |
| 200.102 | FA75 Flexi Tube |  |
| 200.102 | Auger Sleeve |  |
| 200.103 | Hopper Bin Sets 80kg Unassembled |  |
| 200.104 | FA90 Single Boot Assembly with Sight Glass |  |
| 200.107 | FA90 Control Unit |  |
| 200.108 | FA90 Control Unit |  |

| Item Code | Product Description |
|-----------|---------------------|
|-----------|---------------------|

200.109 FA75 Control Unit



200.111 DOL26 Sensor – Angle

200.112 DOL26 Sensor – Thread

200.115 DOL26 Sensor – Straight



200.113 DOL43R Gland

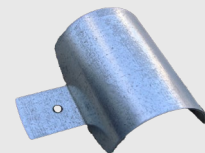
200.113/1 NG25 Gland



200.114 DOL43R Cross Auger Sensor

200.117 Feed Line Control Pan

200.118 FA50 Outlet Slide



200.122 FA75 PVC Pipe Joiner



200.121 FA75 Auger

200.123 FA90 Auger



| Item Code | Product Description | |
|-----------|------------------------------|---|
| 200.124 | FA90 Silo Double Bottom Boot |  |
| 200.125 | FA90 PVC Pipe Joiner |  |
| 200.126 | FA90 Flexi Tube |  |
| 200.127 | FA95 Manual Dropper |  |
| 200.128 | Feed Line Adjuster |  |
| 200.129 | Feeder Tube Clamp |  |
| 200.131 | Feed Line Tube Hanger |  |
| 200.132 | Feed Line Auger |  |
| 200.133 | Feed Line Bearing Assembly |  |

| Item Code | Product Description | |
|--------------------|-------------------------------------|---|
| 200.134 | Feed Line Boot Assembly - Grey |  |
| 200.136 | Feed Line Tube 3m (4 holes) |  |
| 200.137 200.138 | Short Feed Valve Tall Feed Valve |  |
| 200.142 | 100kg Hopper Grill |  |
| 200.146 | Male Pan Restrictor |  |
| 200.147 | FA75 PVC Bend |  |
| 200.148 | FA90 PVC Bend |  |
| 200.149 | Auger Clamp |  |
| 200.151 | Winch H-1500 |  |

Item Code Product Description

200.152 Winch H-3500
 200.153 H-3500 Winch Handle



200.159 Upper Silo Boot



200.161 FA90 Bottom Boot with slide



200.162 Transfer Plate



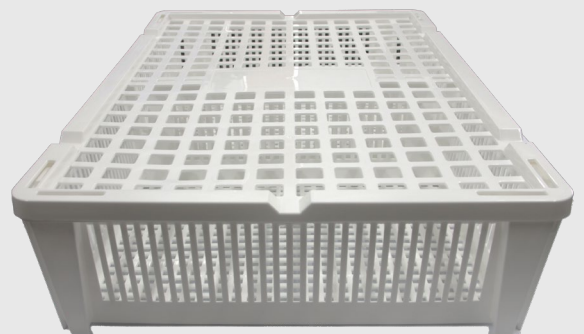
200.163 Cross Auger Bearing and Shaft



200.164 90mm Spiroflex Pipe
 200.165 90mm Spiroflex Clamp

300.101 Chick Basket – White
 300.1011 Chick Basket – Black

300.102 Chick Basket Lid – White
 300.1021 Chick Basket Lid – Black



*any colour basket and lid available on request

Item Code Product Description

300.104

Egg Tray

*any colour available on request



300.105

PTN String Adjuster



400.101

3mm Cable Clamp

400.102

5mm Cable Clamp

400.103

6mm Cable Clamp

400.104

8mm Cable Clamp

400.105

12mm Cable Clamp



400.106

25mm Stainless Clamps small



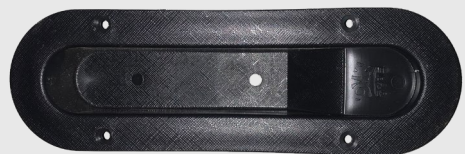
400.107

Hook Bolt



400.108

Sliding Door Handle



| Item Code | Product Description | |
|-----------|---|---|
| 400.109 | Bracket Pulley Nylon 3.5" |  |
| 400.111 | 45mm Feed Line Pulleys *available in white and red |  |
| 400.112 | Aluminium Pulley Large |  |
| 400.113 | Pulley Bracket |  |
| 400.115 | 3.5" Nylon Pulleys - Green |  |
| 400.116 | 90mm Nylon Pulley Wheel Fixed |  |

| Item Code | Product Description | |
|-----------|------------------------------------|---|
| 400.124 | 90mm Nylon Pulley Wheel Adjustable |  |
| 400.128 | Wall Hanging Pulley |  |
| 400.129 | Pulley Wheel Bracket |  |
| 400.132 | Blue Cool Store Roller |  |
| 400.134 | 3mm Foam Tape Roll |  |
| 400.135 | 65mm Screw Hook | |
| 400.136 | Screw Hook Timber 75mm | |
| 400.137 | 90mm Screw Hook |  |
| 400.138 | Sealant 600ml | |

| Item Code | Product Description | |
|-----------|-------------------------------|---|
| 400.139 | 20mm S Hook |  |
| 400.141 | 40mm S Hook | |
| 400.142 | S Hook 10mm x 3mm Zinc Plated | |
| 400.143 | Stainless Tube Clamp |  |
| 400.144 | Electric Winch Disc |  |
| 400.145 | Electric Hoist Winch PA400 |  |
| 400.146 | Steel Winch Plate |  |
| 400.147 | Plastic Wing Nut |  |
| 400.148 | Plastic Wing Screw | |
| 400.149 | Galvanised Wire Cable |  |
| 400.151 | 2mm | |
| 400.152 | 2.5mm | |
| 400.153 | 3mm | |
| 400.154 | 5mm | |
| 400.154 | 7mm Wire Cable Stainless | |

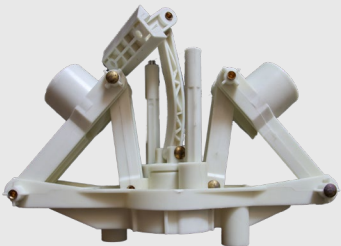
| Item Code | Product Description | |
|-------------------------------|--|---|
| 400.156 | Feed Line Auger Clamp |  |
| 400.157 | Auger Clamp + screws |  |
| 500.101 | Fan Blades *for 50" Fans | |
| 500.104 500.105 | 36" Fan Bearing Assy 50" Fan Bearing Assy |  |
| 500.106 | Fan Belt A62.5 V-Belt |  |
| 500.107 | Fan Belt A89 V-Belt |  |
| 500.108 500.109 500.111 | 24" Galvanised Fan 36" Galvanised Fan 50" Galvanised Fan |  |
| 500.112 | 36" 4kw Fan Motor | |

| Item Code | Product Description |
|-----------|---------------------|
|-----------|---------------------|

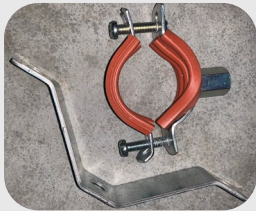
| | |
|---------|-------------------------|
| 500.114 | 36" Stainless Steel Fan |
| 500.115 | 50" Stainless Steel Fan |



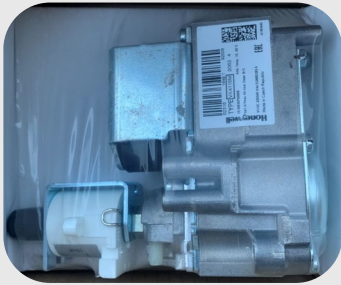
| | |
|---------|-------------------|
| 500.116 | 50" Fan Throw out |
| | Black |
| 500.117 | White |



| | |
|---------|------------------|
| 500.118 | Gas Pipe Fitting |
|---------|------------------|



| | |
|---------|---------------|
| 500.119 | CVI Gas Valve |
|---------|---------------|



| | |
|---------|------------------------|
| 500.122 | Heater Baffle (master) |
|---------|------------------------|



| | |
|---------|-------------------|
| 500.113 | 50" Fan Motor 1HP |
|---------|-------------------|

| Item Code | Product Description | |
|-----------|---------------------|---|
| 500.123 | Heater Controller |  |
| 500.124 | Centrifugal Fan |  |
| 500.125 | Heater Lead | |
| 500.127 | Heater Motor |  |
| 500.126 | C75 Heater Master |  |
| 500.128 | Mounting Kit | |
| 500.131 | Heater Panel Switch |  |
| 500.132 | Thermo Couple |  |

| Item Code | Product Description |
|-----------|---------------------|
|-----------|---------------------|

500.147 36" Light Trap
 500.148 50" Light Trap



800.101 Fan Motor 36" .75kw 240V 50H

800.102 .55kw Feed Line Cross Auger Drive Unit

800.103 .55kw 3 Phase Feed Line Motor 60hz



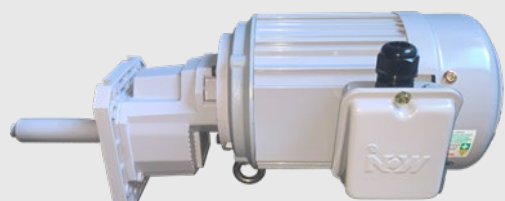
800.104 37.5kw Feed Line Motor



800.105 Varvel Feed Line Gearbox



800.106 0.75kw Feed Line Drive Unit
 3 Phase



| Item Code | Product Description | |
|-----------|--|--|
| 800.107 | 0.75kw Feed Line Drive Unit Single Phase |  |
| 800.108 | 5HP Pop Hole Door Motor |  |
| 900.101 | Poultry LED Light *Complete Lighting Systems available upon request |  |
| 500.154 | PTN Climate Controller *can include Load Cells |  |
| 700.129 | Angle Lengths 40x40mm - 5m length | |
| 700.131 | Cool Room Channel 50mm | |
| 700.132 | 75mm Cool Store Channel - 5m length | |
| 700.133 | Aluminium Flat 40x3mm | |

We also stock a wide range of PIR Panel, Architech Panel and Roof Panel - Enquire for specs